

Sydney Metro West

Strathfield Rotary

Robin Baird and Julian Latouche

May 2025

sydneymetro.info

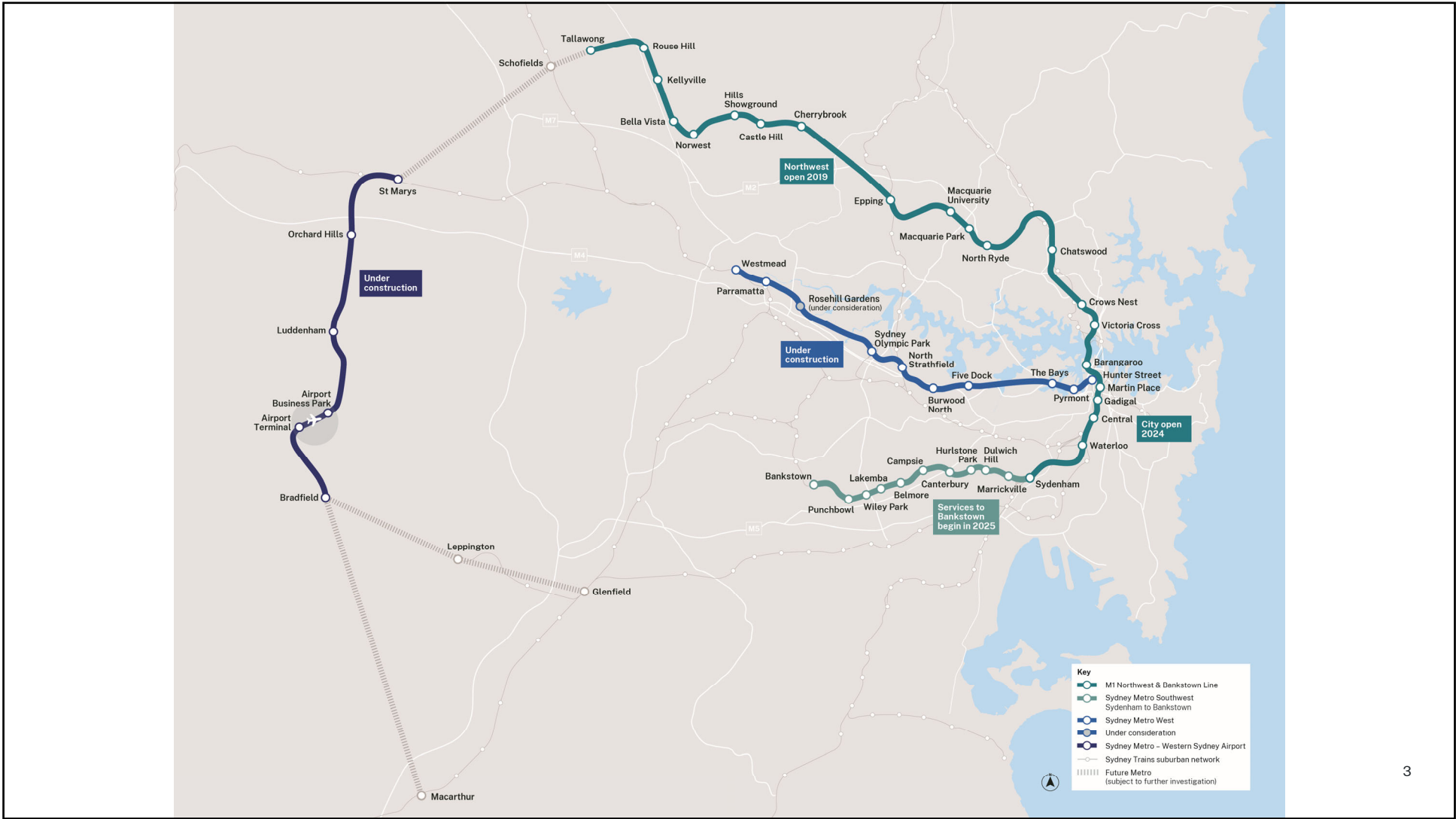


OFFICIAL

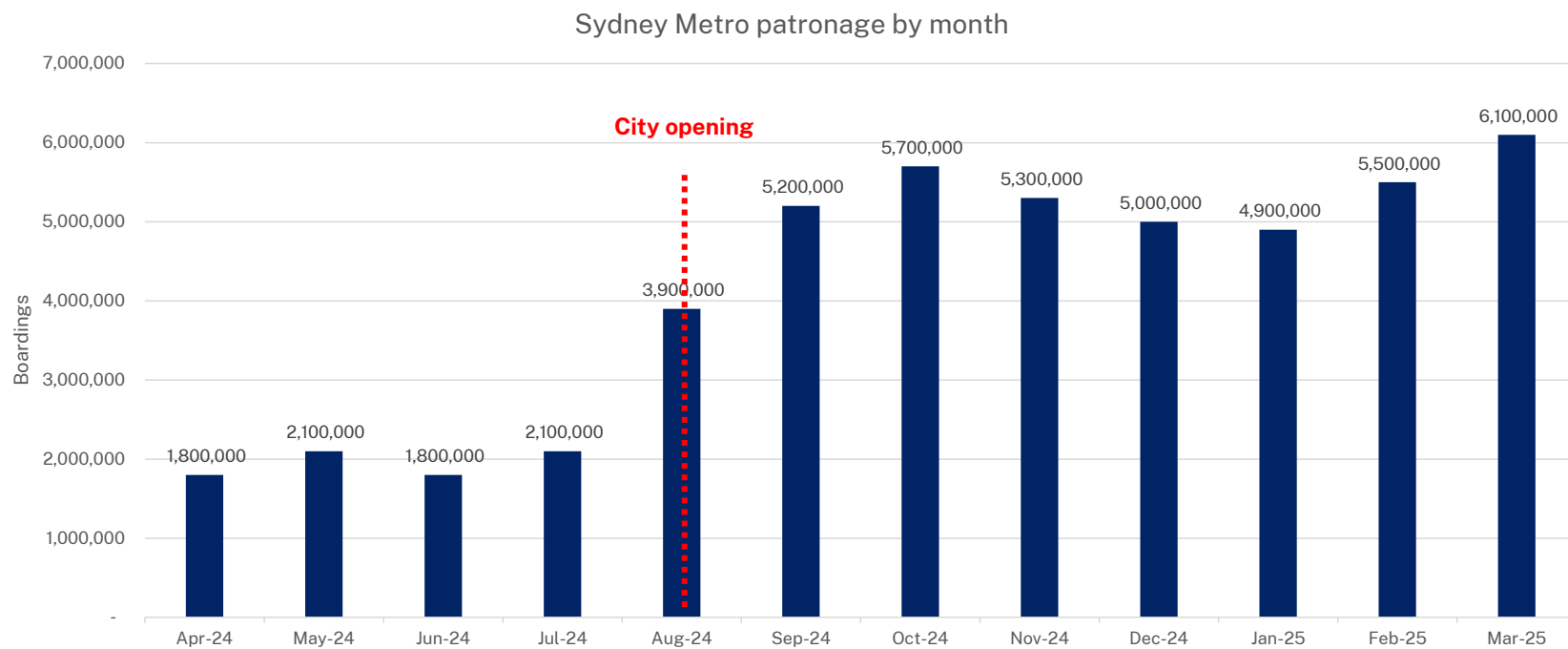
Acknowledgement
of Country

Sydney Metro pays respect to Elders past and present, and recognises and celebrates the diversity of Aboriginal peoples and their ongoing cultures and connections to the lands and waters of NSW.

OFFICIAL



Metro patronage by month



Note: Provisional patronage sourced from AAI dashboard as at 17/04/25

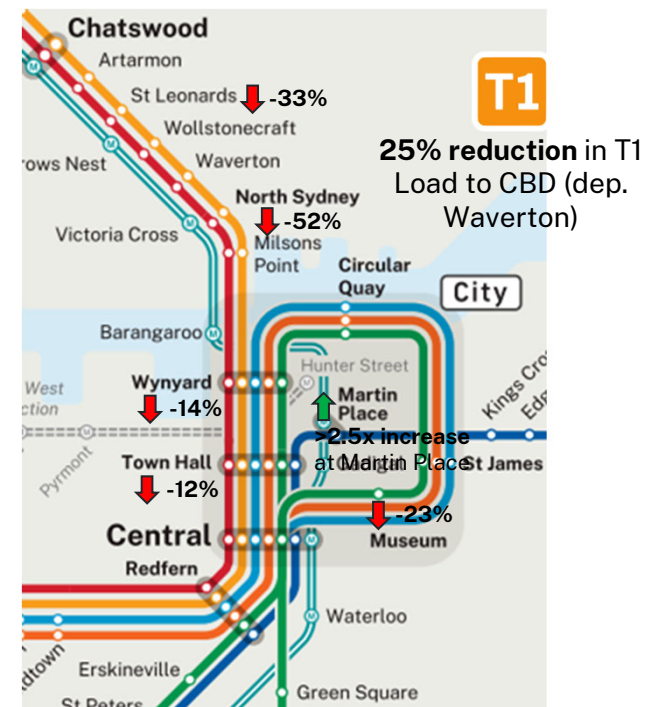
Patronage Shifts – CBD & Lower North Shore Stations

Metro stations provide significant relief at key Heavy Rail stations in the CBD.

- The most significant decreases in patronage are at Town Hall, Wynyard, and Museum stations.
- Martin Place recorded a *167% increase* in patronage

There is also significant relief on the T1 North Shore Line.

- Customers now have the option to use Victoria Cross and Crows Nest - patronage at North Sydney has halved, and patronage at St Leonards has fallen by 33%.
- Peak loading has fallen by 25%.

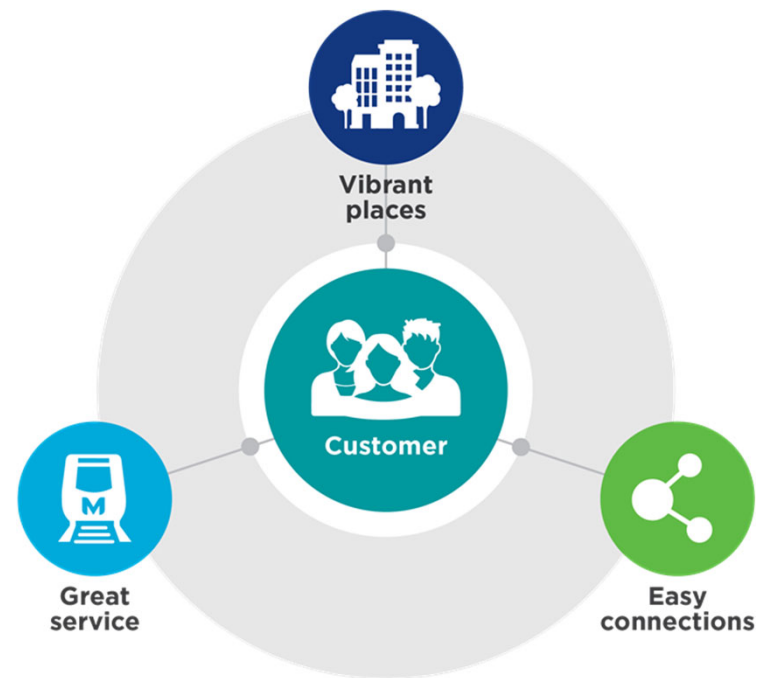


5

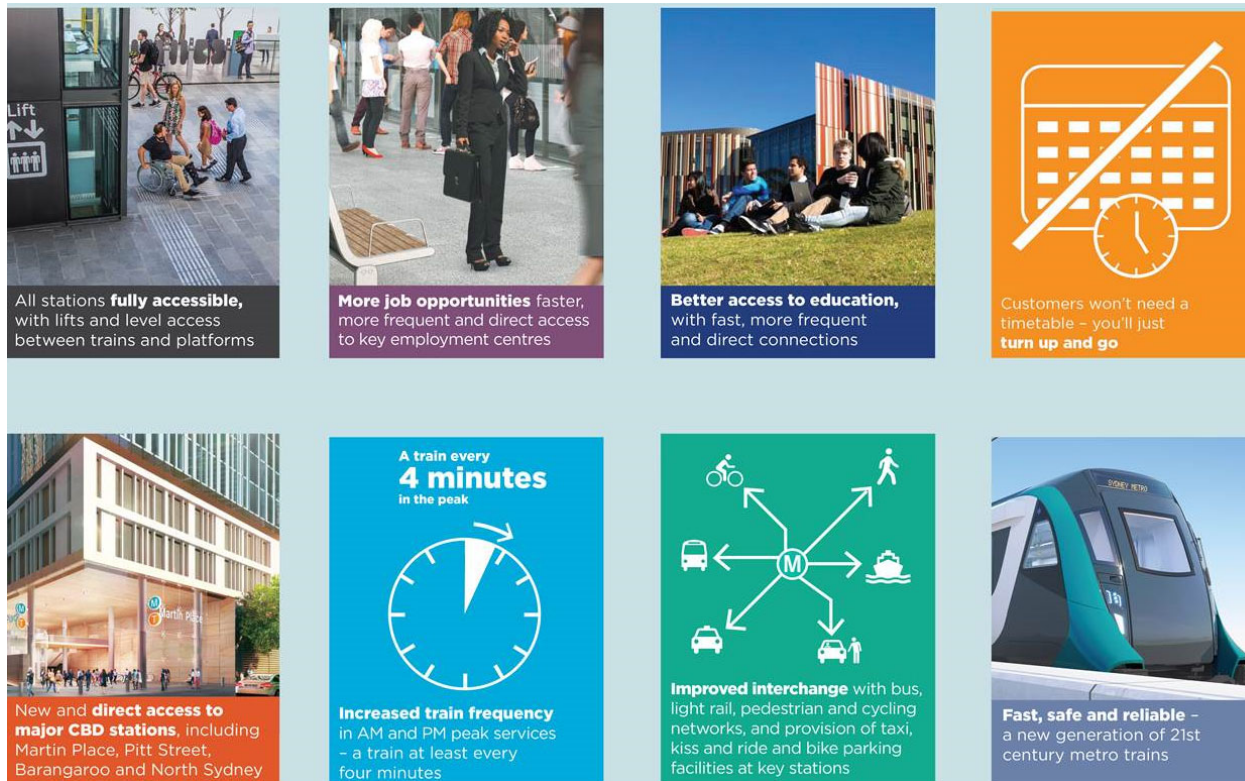
Boardings are averaged for typical weekdays: 13-15 Aug 2024 (Pre-M1), 4-6 Mar 2025 (Post-M1). Figures quoted for shared stations include both HR and Metro boardings.

OFFICIAL

A world class metro



Customer focus and benefits



Achievements

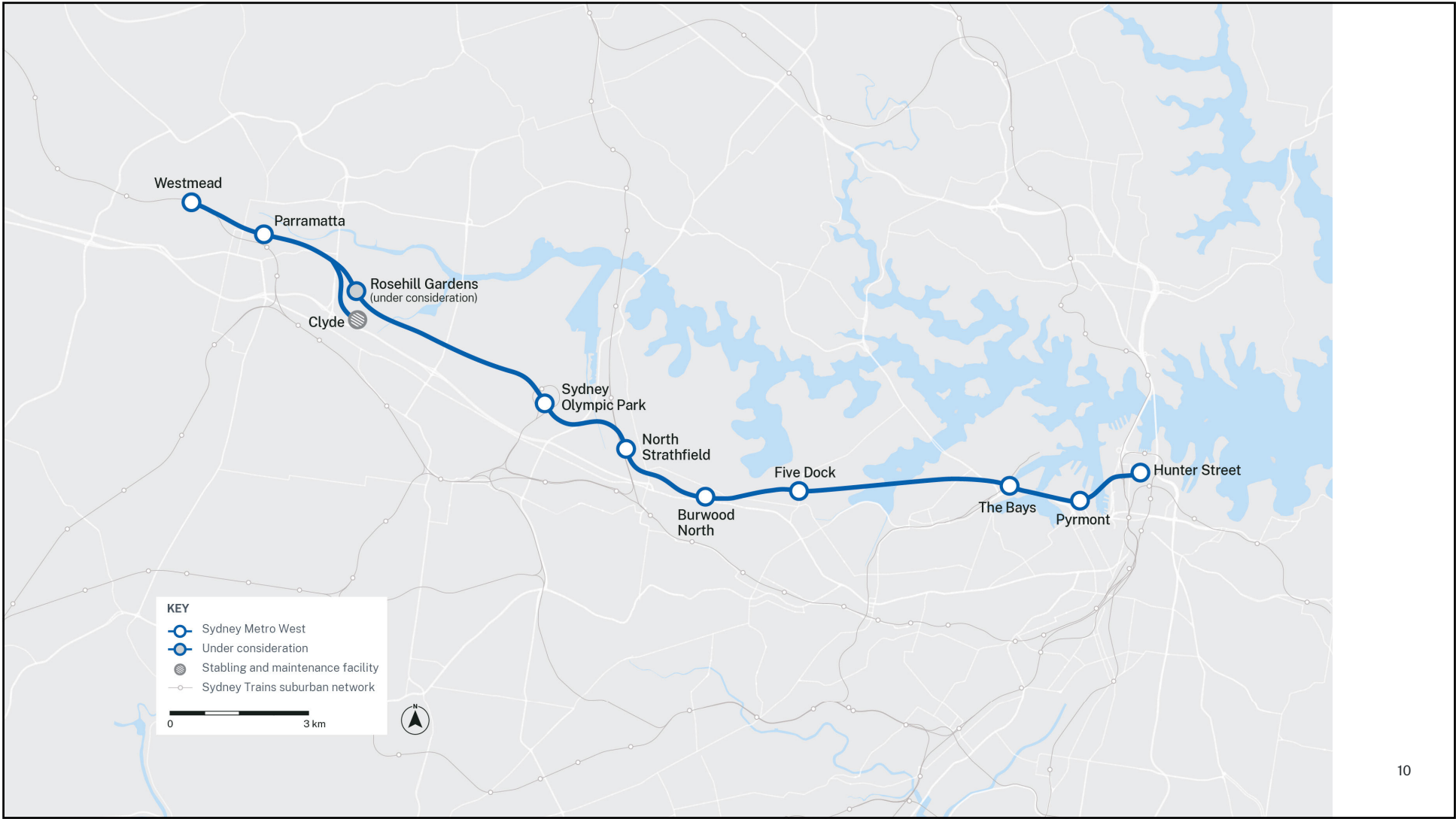
Sydney Metro currently has a diverse workforce of 38,889 people which include:

- 10,093 learning workers
- 680 apprentices
- 1,991 women in non-traditional trades or occupations
- 1,403 Aboriginal Peoples
- 5,979 employees under 25
- 99.8% per cent of jobs filled by Greater Sydney residents and 55 per cent of jobs filled by Greater Western Sydney residents
- 10,228 employees in local, sustainable (where meaningful employment of 26 weeks or more has been obtained) jobs

Sydney Metro West overview



OFFICIAL



Why Sydney Metro West?



Taking cars off Sydney roads,
with about 83,000 fewer car trips
expected every weekday by 2036



Faster and more frequent access to major
employment and education centres



Connecting Greater Western Sydney
by doubling rail capacity between
Parramatta and Sydney CBD



Creating vibrant and attractive places
integrated with local areas



Linking new communities
to rail services



Delivering new stations
to support housing supply

OFFICIAL

Transforming places

Parramatta



Westmead



The Bays



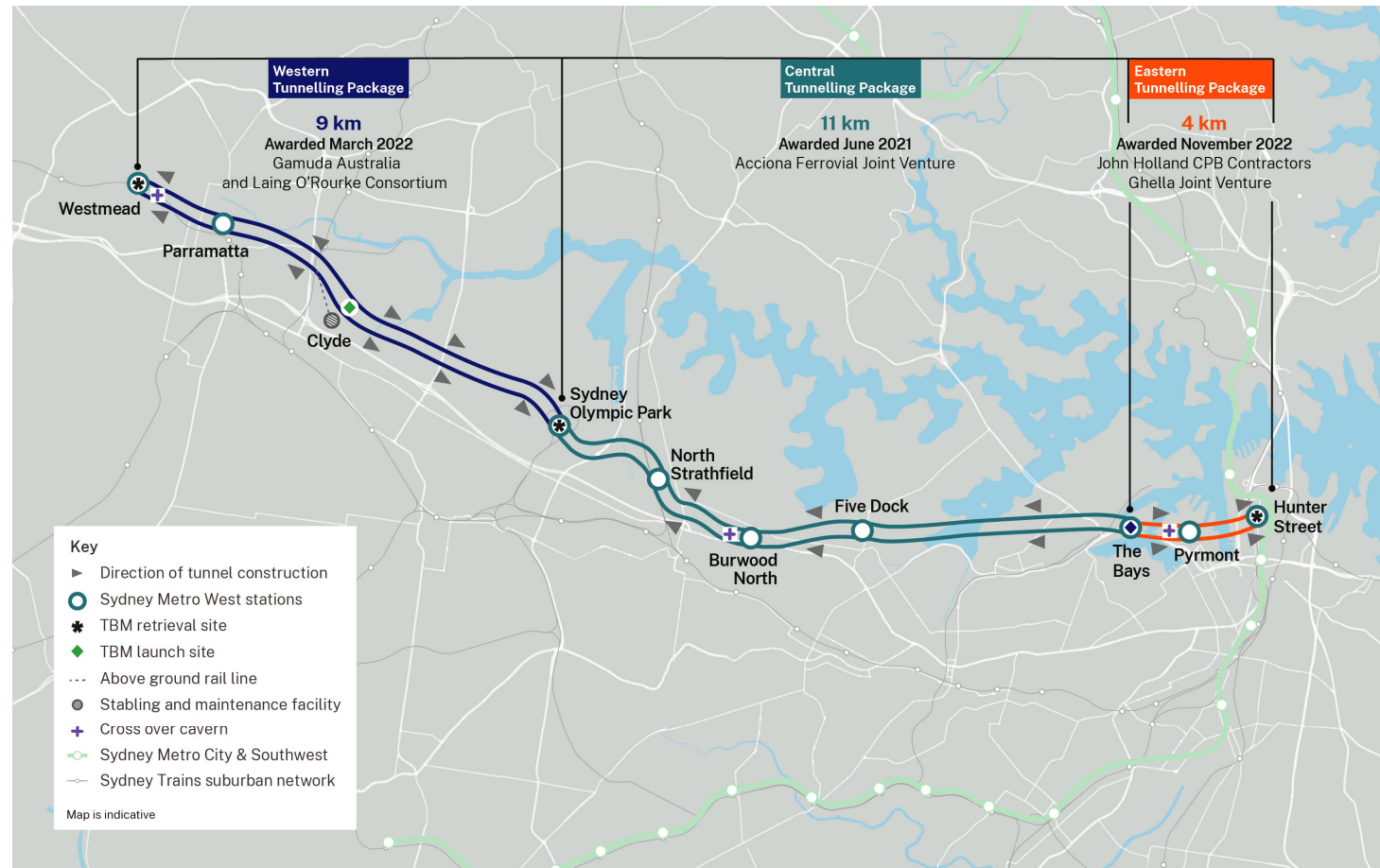
Sydney Olympic Park



OFFICIAL

*Artist impressions, indicative only

Tunnelling overview



OFFICIAL

Project timeline



2016-2019

- Sydney Metro West project announced
- Early stakeholder and community engagement
- Stations confirmed between Westmead and The Bays



2020-2023

- Stations confirmed at Pyrmont and Hunter Street in Sydney CBD
- Sydney Metro West received planning approval following public exhibition of three Environmental Impact Statements for tunnelling, stations, precincts and operations
- Commenced planning for over and/or adjacent station development at Parramatta, Sydney Olympic Park, Hunter Street and Pyrmont



2023-2026

- Tunnelling commenced across the project and is anticipated to be finished by 2026
- Investigating two potential additional stations west of Sydney Olympic Park
- Planning continuing for over and/or adjacent station development at Parramatta, Sydney Olympic Park, Hunter Street and Pyrmont

We are here



2027-2032

- Station construction commencing
- Construction of over and/or adjacent station development at specific stations
- Construction of railway systems and signalling
- Testing and commissioning



2032

- Sydney Metro West target opening

OFFICIAL

2025 Project Milestones

- TBM tunnelling complete on Central Tunnelling Package
- Tunnel boring machines (TBMs) for western tunnelling package breakthrough at Clyde Junction caverns and relaunched to Parramatta
- TBMs enroute to Pyrmont for breakthrough this year
- Eastern tunnelling package segment production complete
- All sites demolition complete

What's coming up?

- Completion of Hunter Street turnback excavation
- TBMs breakthrough at Pyrmont
- Receive determination for Pyrmont and Parramatta



Metro West Sustainability Plan

The Sydney Metro West Sustainability Plan outlines the **principles**, **initiatives** and **targets** for the project, including:

- Zero emission electricity for operations
- 20% reduction in carbon emissions across the infrastructure lifecycle
- 10% reduction in potable water use
- 100% beneficial reuse of clean spoil
- 95% waste recycled
- 35% replacement of cement with alternatives.



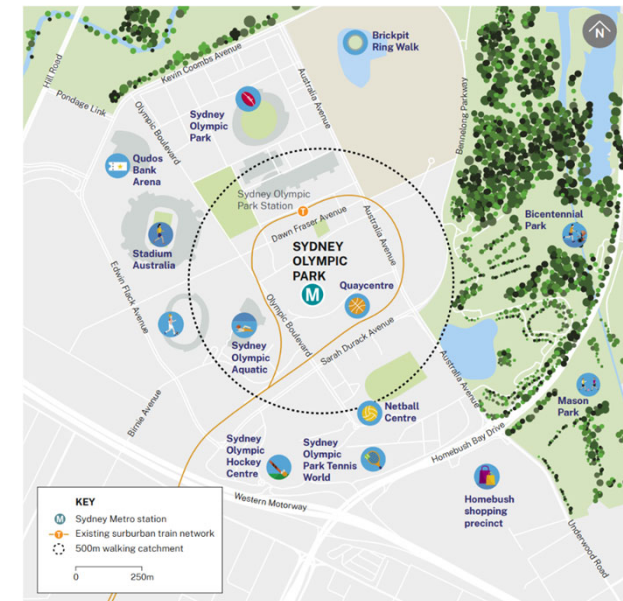
Sydney Metro West alignment



OFFICIAL

18

Sydney Olympic Park metro station



Sydney Olympic Park



OFFICIAL

North Strathfield Station



North Strathfield Station



OFFICIAL

Burwood North Station



Tunnel ready to be handed over to the next contractors for fit out



OFFICIAL

Five Dock Station



Hunter Street Station



How we engage

Our Stakeholders & Communities

Sydney Metro West has been engaging with the community, stakeholders and industry since 2017. Feedback gathered has helped shape the project.

We engage through a range of methods, including:

- dedicated Place Managers
- community drop-in sessions and events
- stakeholder briefings/meetings
- interactive portal and Sydney Metro website
- 24/7 community info line
- MetroConnect app
- letterbox drops
- targeted emails
- multilingual communications



32

OFFICIAL

In person and digital community engagement



Thank you

sydneymetro.info



OFFICIAL