



# Rotary Community Group 4 Growth Plan Workshop

**Saturday 24 August 2024**

**Bharathi Rengarajan**  
Rotary Community Leader RCG 4 9675

include



# Welcome!

## Why are we here?

*The purpose is to get to know each other and build our Rotary Community Group Growth Plan!*

## **Rotary Community Groups**

**The regional model includes a new way of grouping clubs, with each group of clubs referred to as a 'Rotary Community Group' (RCG). RCGs will be based on what clubs have in common, such as geography, type of club or shared language. They will meet in person, online, or a combination of both, and will choose how often they meet.**

**The RCGs are designed to foster greater collaboration among clubs so they can work more effectively and at a larger scale than they could on their own. Clubs will be able to nominate both a primary and secondary way they prefer to be grouped. Secondary groupings are optional and will mainly be online. For example, a club might want a primary geographic group and also want to join a network of other clubs that are passionate about a particular cause.**

# ROTARY COMMUNITY GROUPS (5)

	9675-1	9675-2	9675-3	9675-4	9675-5
RCL	Stephen Lovison (Rotary Sydney Cove)	Shane Burette (Rotary Wetherill Park)	Vimla Hayman (Rotary St George Next Gen)	Bharathi Rengarajan (Rotary Granville)	Margaret Uitterlinden (Rotary Dapto)
#Clubs	11	13	8	12	9
9675	Bondi Junction Botany Randwick Kings Cross Maroubra Rose Bay South Sydney Sydney Sydney Cove Sydney Cove-Connectors Satellite Sydney Darling Harbour Sydney Inner West	Camden Campbelltown Gregory Hills Next Gen Ingleburn Liverpool Liverpool West <a href="#">Macarthur Rotaract</a> Macarthur Sunrise Narellan Picton <a href="#">Southwest Sydney Rotaract</a> Wetherill Park Wollondilly North	Caringbah Cronulla Hurstville Marrickville Padstow Sutherland Rotary St George Next Gen Sylvania Waters Passport	<b>Blacktown City</b> <b>Burwood</b> <b>Campsie</b> <b>Concord</b> <b>Drummoyne</b> <b>Environment &amp; Habitat</b> <b>Five Dock</b> <b>Granville</b> <b>Holroyd</b> <b>Mt Druitt</b> <b>Parramatta</b> <b>Strathfield</b>	Corimal Dapto Fairy Meadow <a href="#">Illawarra Rotaract</a> Kiama Shellharbour City <a href="#">UOW Rotaract</a> West Wollongong Wollongong

Why change?



Let's take a step back:

- Why did we change to Rotary Community Groups?



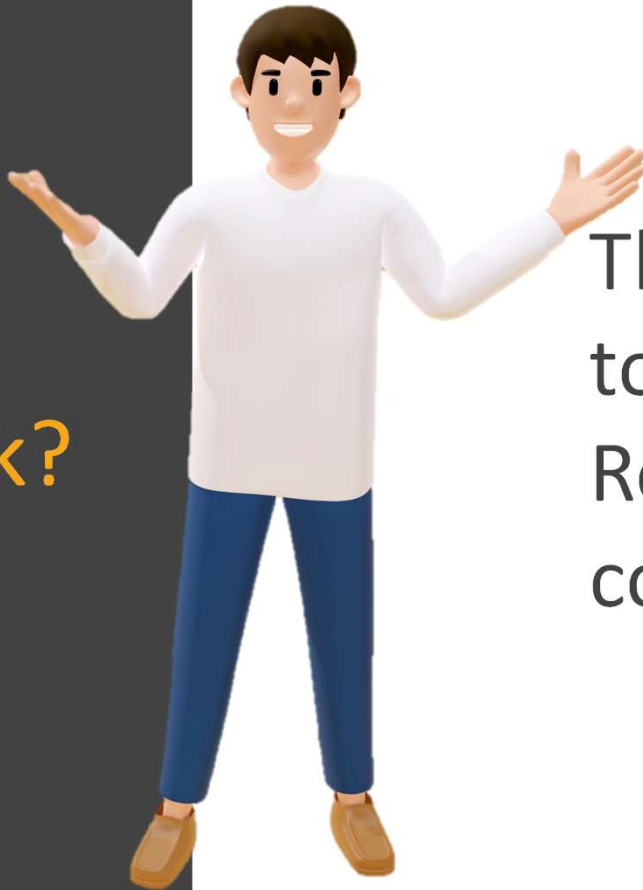
## Why change?

Rotary in our Zone is in free fall

- Fewer clubs with fewer members – depleted in numbers and energy
- Not all clubs! But every District in our Zone is declining



How will  
they work?



The purpose of the RCG is  
to grow Rotary and  
Rotaract in the area/s  
covered by the RCG



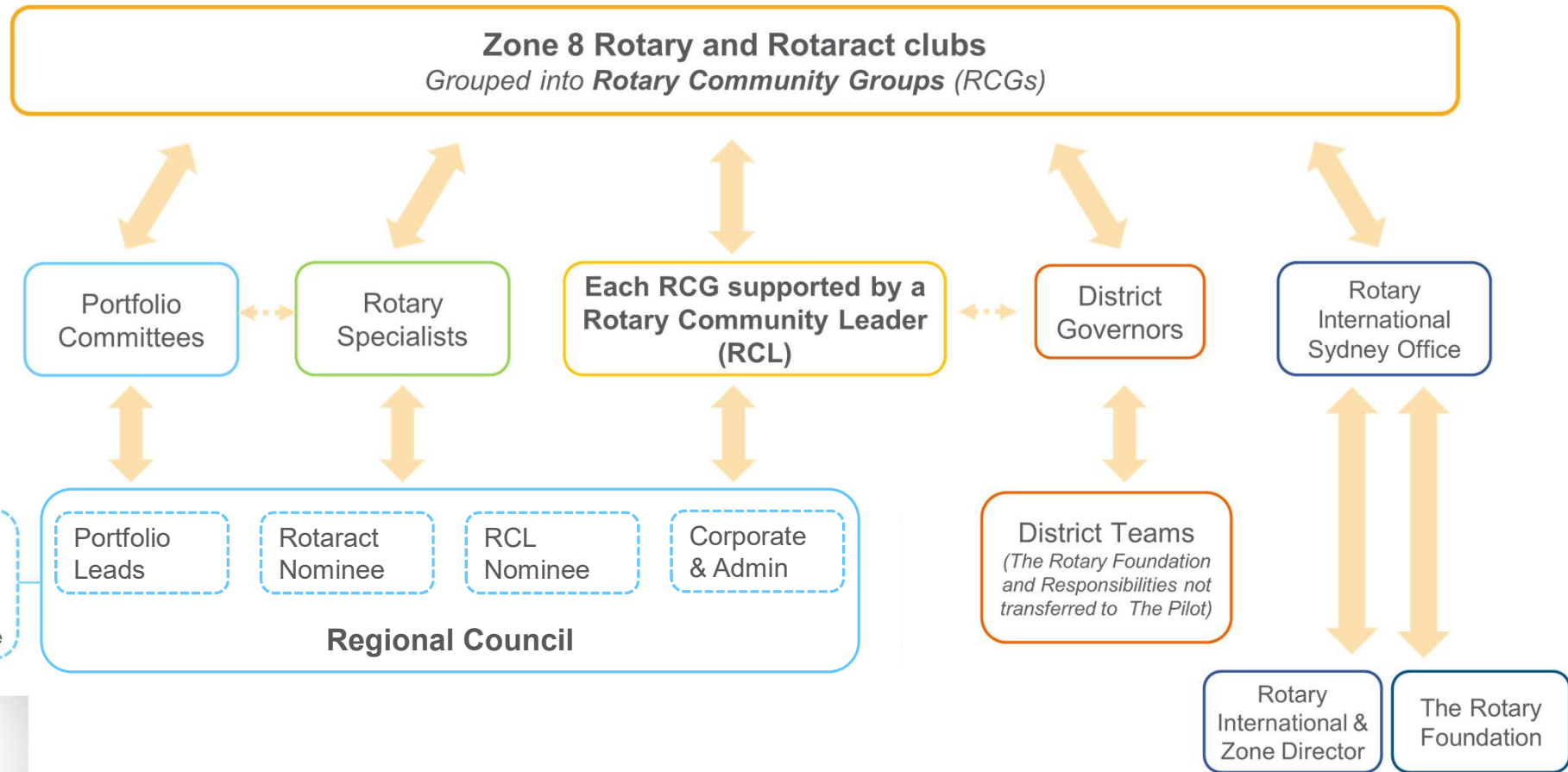
# How will they work?

- Each RCG creates its own growth plan/s (may be more than one)
- Facilitated by your Rotary Community Leader
- Clubs look at how they want and need to develop eg:
  - if the RCG is planning a major membership drive, how welcoming and attractive is my club?
  - if the RCG is planning a multi-club project, how engaged are my club members?





# Club support network



# What is the role of your RCL?

## Rotary Community Leaders will....



- Facilitate the development of RCG Growth Plans
- Support club leaders within their RCG to lead and build relationships in their own clubs
- Be available to provide or facilitate access to the support clubs need

## Rotary Community Leaders won't....



- Schedule routine club visits
- Report to, or be directed by, District Governors
- Assess clubs or determine what they need or should do

# What is the role of your Rotary Community Leader (RCL)?

- In summary, the RCL's role is to facilitate club leaders to:
  - create your RCG growth plan/s
  - look at your own club in light of what your club needs in order to contribute to, and benefit from, the growth plan
  - engage with your club members in the above
- In that context:
  - coach and mentor club leaders
  - ensure the RCG and its clubs obtain the support and expertise you need



# Our name



What shall we be called?

**Akuna**

(Indigenous word)

'flowing water' and 'the way forward'  
'To know' or 'follow'



# Rotary Community Group Action Plan

Name of RCG:

RCG 4 - 9675

Name of RCL:

AKUNA

Date of Creation:

24 / 08 / 2024

Members involved in creation:

10

Key for RI Action Plan Area:	
Impact	Increase Our Impact
Reach	Expand Our Reach
Engage	Enhance Participant Engagement
Adapt	Increase our Ability to Adapt

Project	RI Action Plan Area/s	Actions	Lead	Clubs involved (subject to confirmation)	Timing
Domestic Violence Walk	Impact	Clubs to identify lead Police Approval for intention to assembly Traffic Management Plan Location and Route Organise T Shirts	Barry Antees	All Clubs	End Nov 24
Polio Eradication Movie Night	Engage	Finalise Centralised Location Coordination and negotiation for ticket pricing Advertising within the club and community Guest Speaker to present about Rotary and Polio eradication efforts	Cheryl Deguara	All Clubs	Oct-24
Social Media Outreach for membership	Reach	Templates Elevated Pitch about Rotary Multi Lingual Literature	Natalie Cowell	All Clubs	End Nov - Early Dec 24 Repeat in Mar 25
	Adapt				